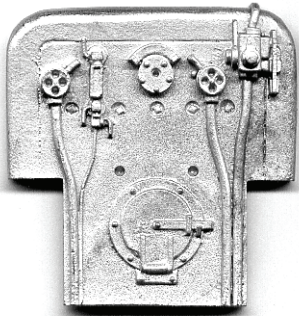
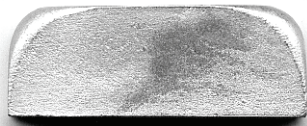


LNER J20 Casting Identification and Check List



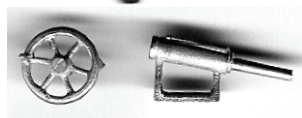
Back Head



Firebox Front



Regulator



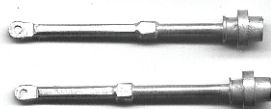
Reverser & Handwheel



Cab Lubricator



Firedoor Shield



Piston Valve Rods



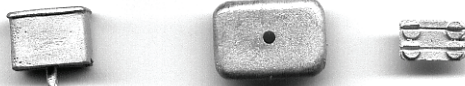
Smokebox Door



Chimney



Dome



Ramsbottom Safety Valve



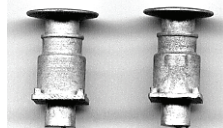
Brake Cylinder



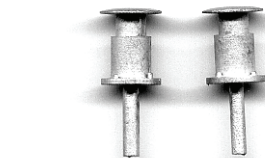
Reversing Lever Cover



Snifting Valves



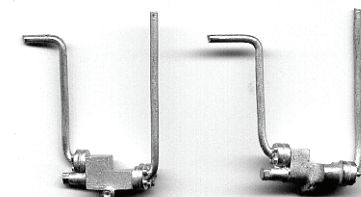
LNER Group Standard Buffers X 4



GER Buffers X 4 and Packing Rings X 2



Injectors R/H & L/H



Vacuum Pipes X2



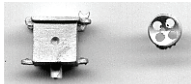
Ross Pop Safety Valves X 2



Whistle



Ejector Elbow



Wakefield Lubricator



Cup Lubricators X 2



Clack Pipe Tops X 2



Cab Gauges Large & Small



Smoke Box Door Handle



Coupling Centres X 2



Sandbox Lids X 6



Washout Plugs X 9



Oil Bottle Bucket & Shovel



Tender Brake Standard



Tender Water Filler X 2



Headcode Disc Holder



Tender Tool Boxes Large and Small



Tender Axlebox X 6



Tender Spring X 6



Tender Flairs

When I made the series of moulds for the J20 I repeated some of the smaller parts. so hopefully you should find some extras to cover damage or loss.

LNER J20 Other Parts Identification and Check List



Printed Circuit Board Strips
For Use With Wire Wiper Pickups



Brass Axle Bearings
12 X Standard and
4 X Alternative Bearings
With Thin Shoulders



Split Pins X 26



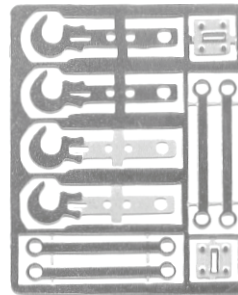
Electrical Wire
For Pickups.
1 X 18" Black
1 X 18" Red



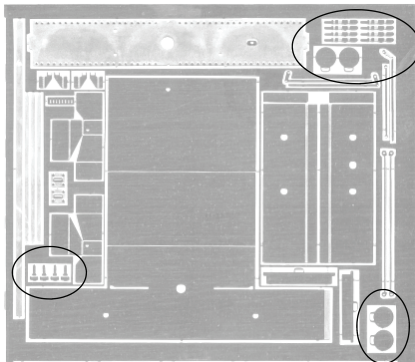
6BA Brass Screws X 2
6BA Brass Nuts X 2



8BA Brass Screws
Long X 2
8BA Brass Screws
Short X 2
8BA Brass Nuts X 4



Screw Coupling Etch



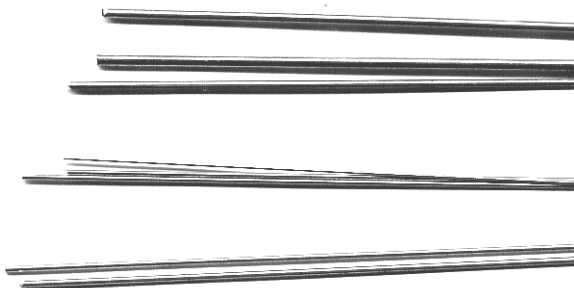
Etch
containing
Lamp
Brackets and
Head
Code Discs.
Ignore all
other parts.



3 Link Coupling Hooks X 4

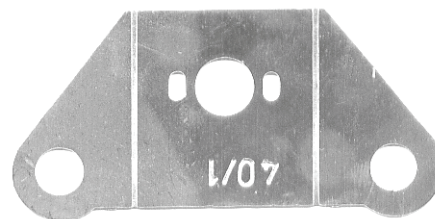


Brass Links For 3 Link
Couplings X 4

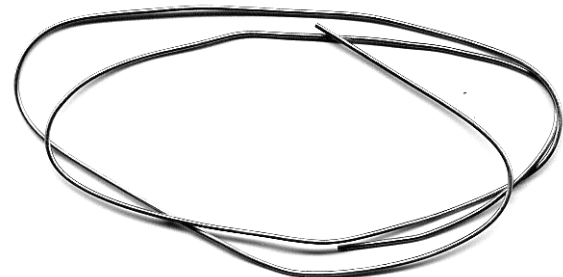


Selection of Wire and Rod

- 1.6mm dia Brass Rod X 6"
- 1.2mm dia Copper Rod X 6"
- 1.4mm dia Copper Rod X 12"
- 0.7mm dia Brass Wire 10" long X 6
- 0.9mm dia Brass Wire 10" long X 6
- 0.45mm dia Spring Brass Wire 10" long
(for use as wire wiper pickups) X 2

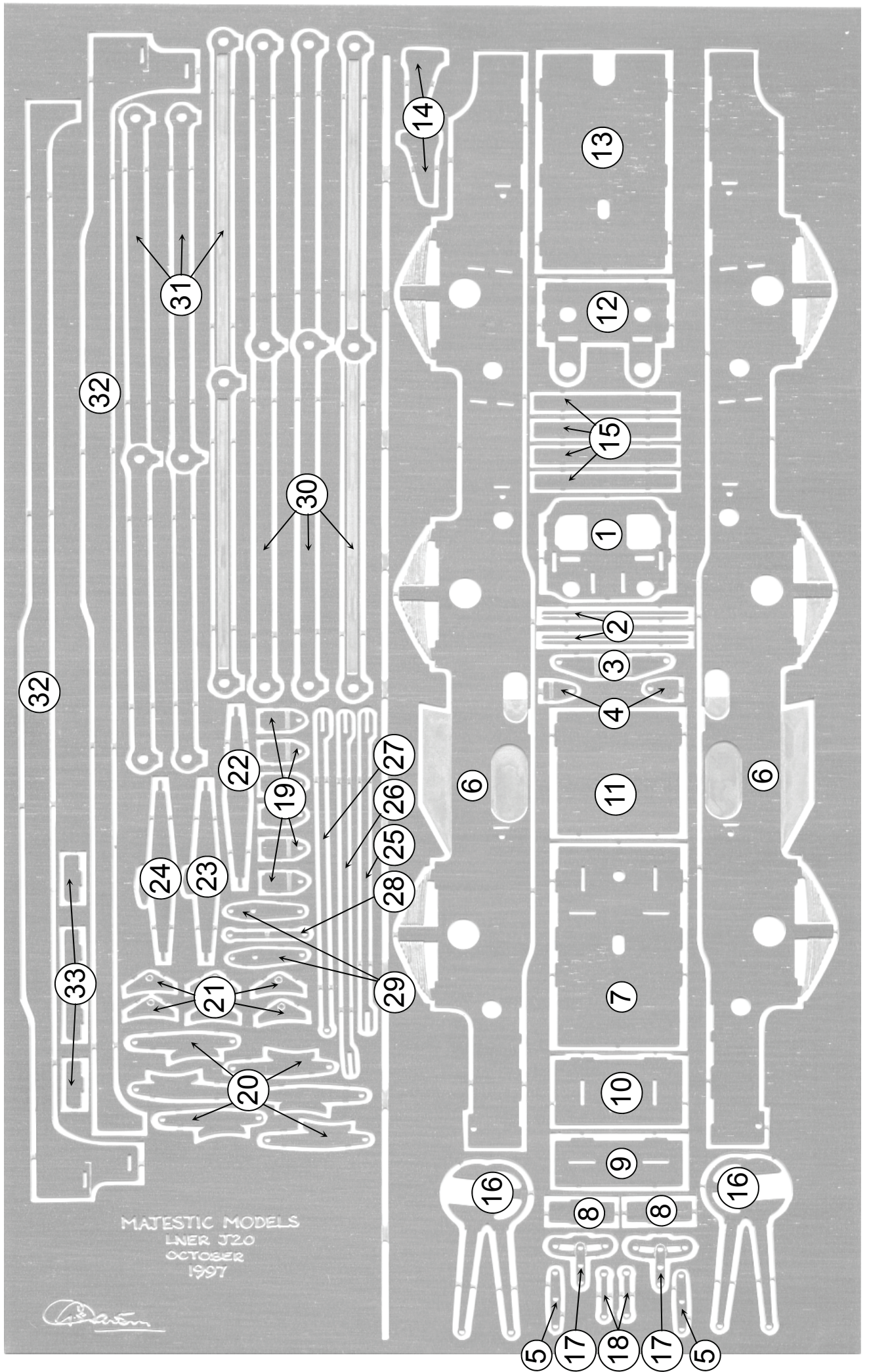


Motor
Mounting
Plate

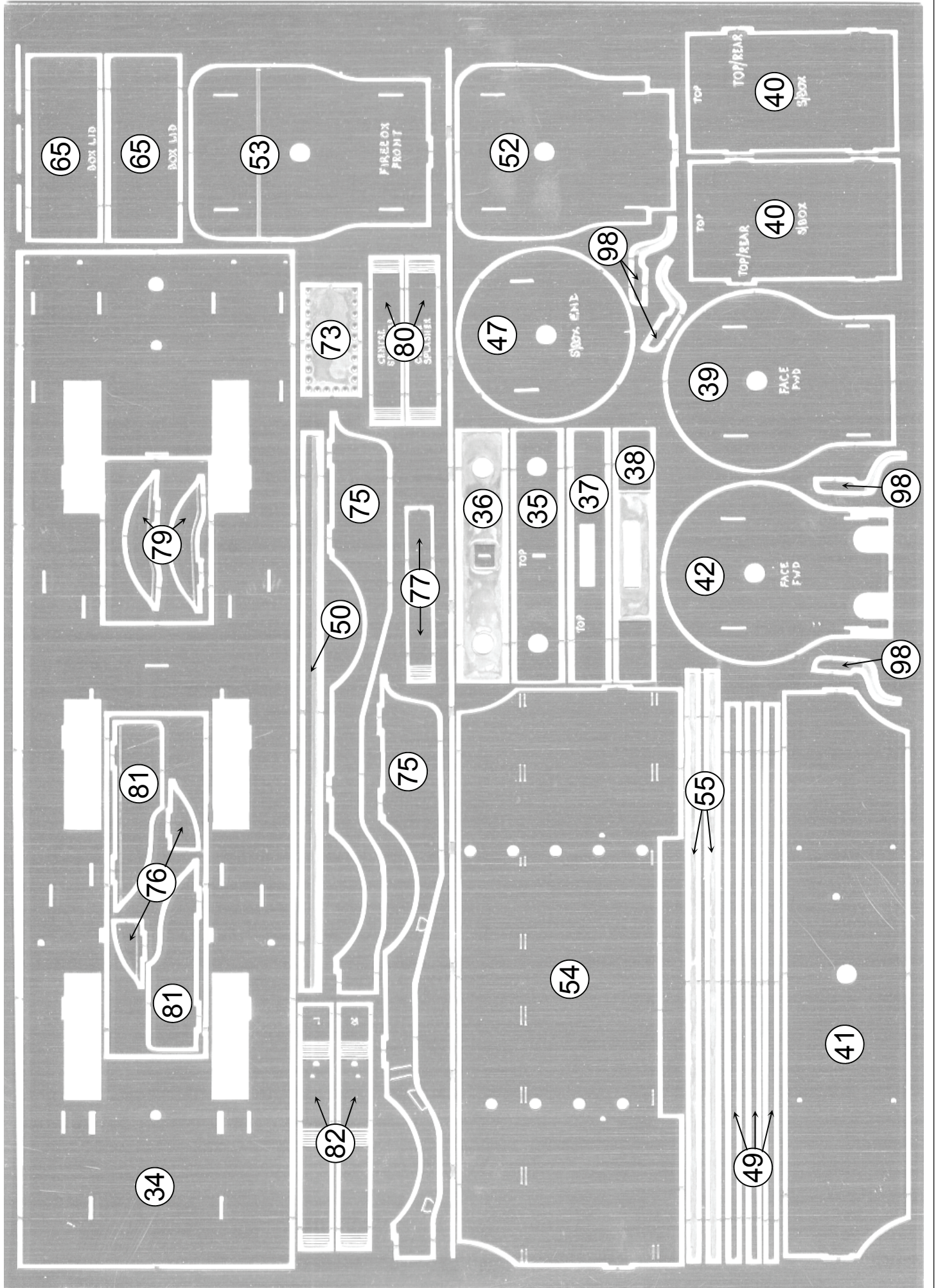


Tinned Soft Copper Wire 22swg Two Turns.
For Cab Rain Strips. Clamp one end in vice
and pull other end with pliers to straighten.

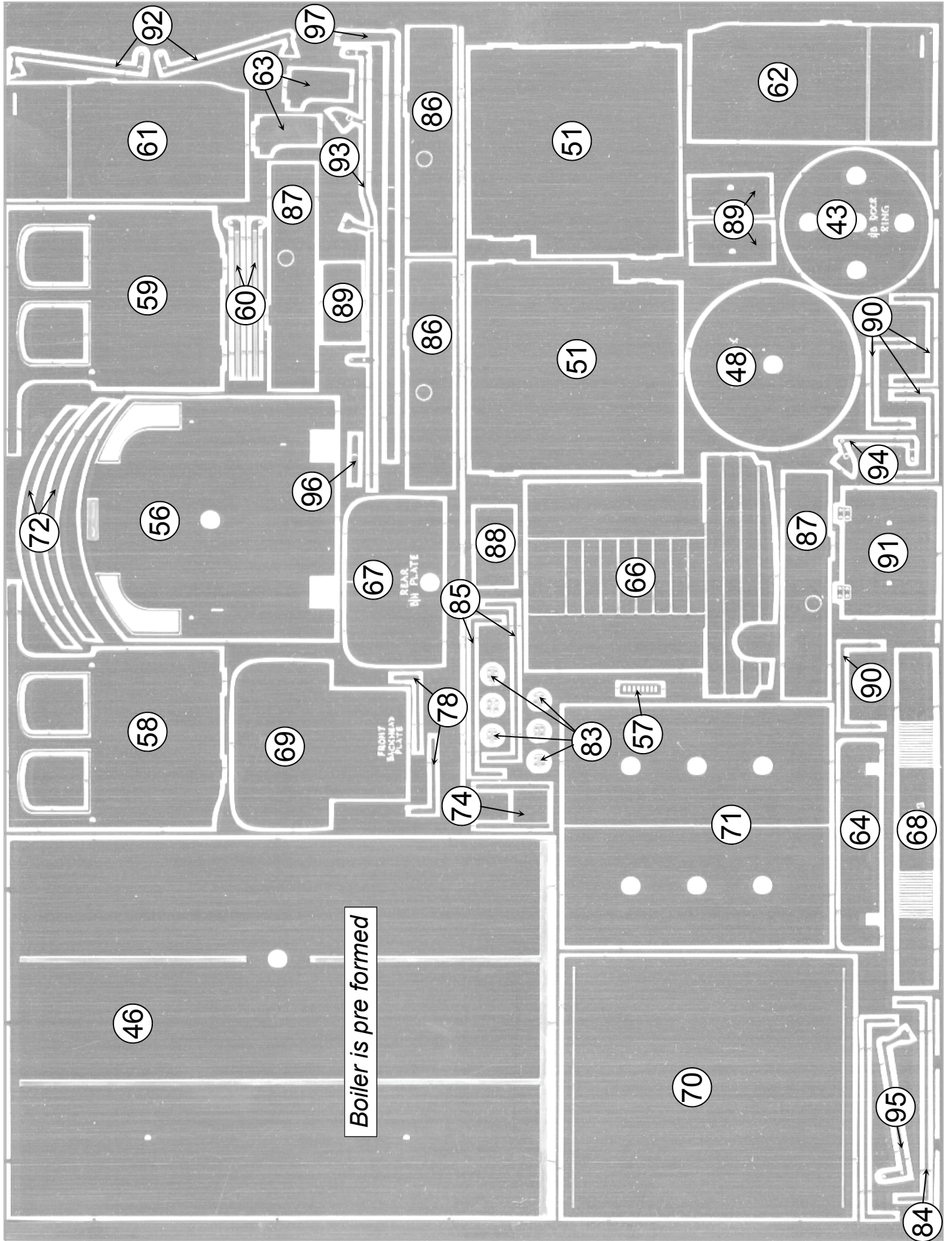
LNER Class J20 Locomotive Nickel Silver Etched Parts Identification

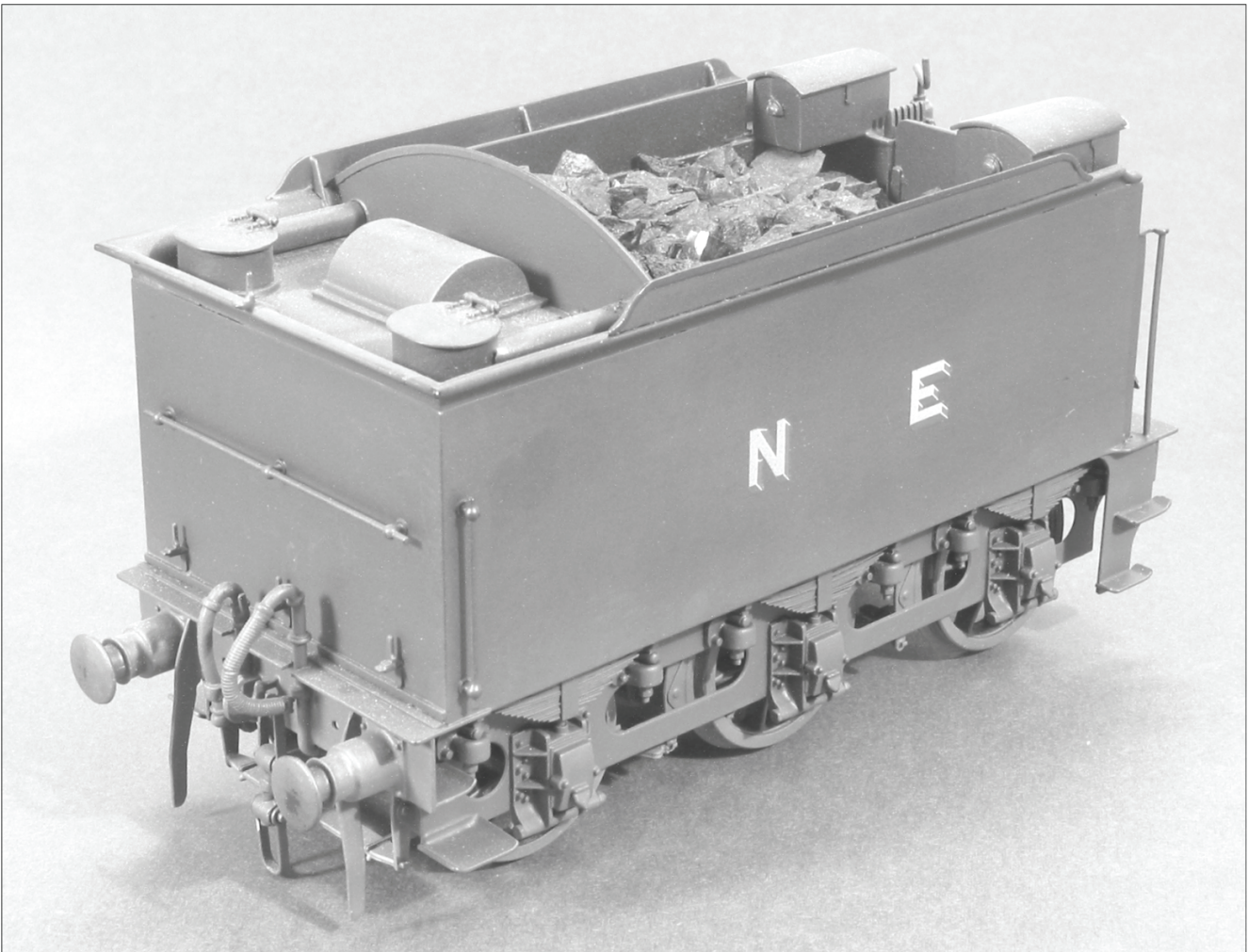
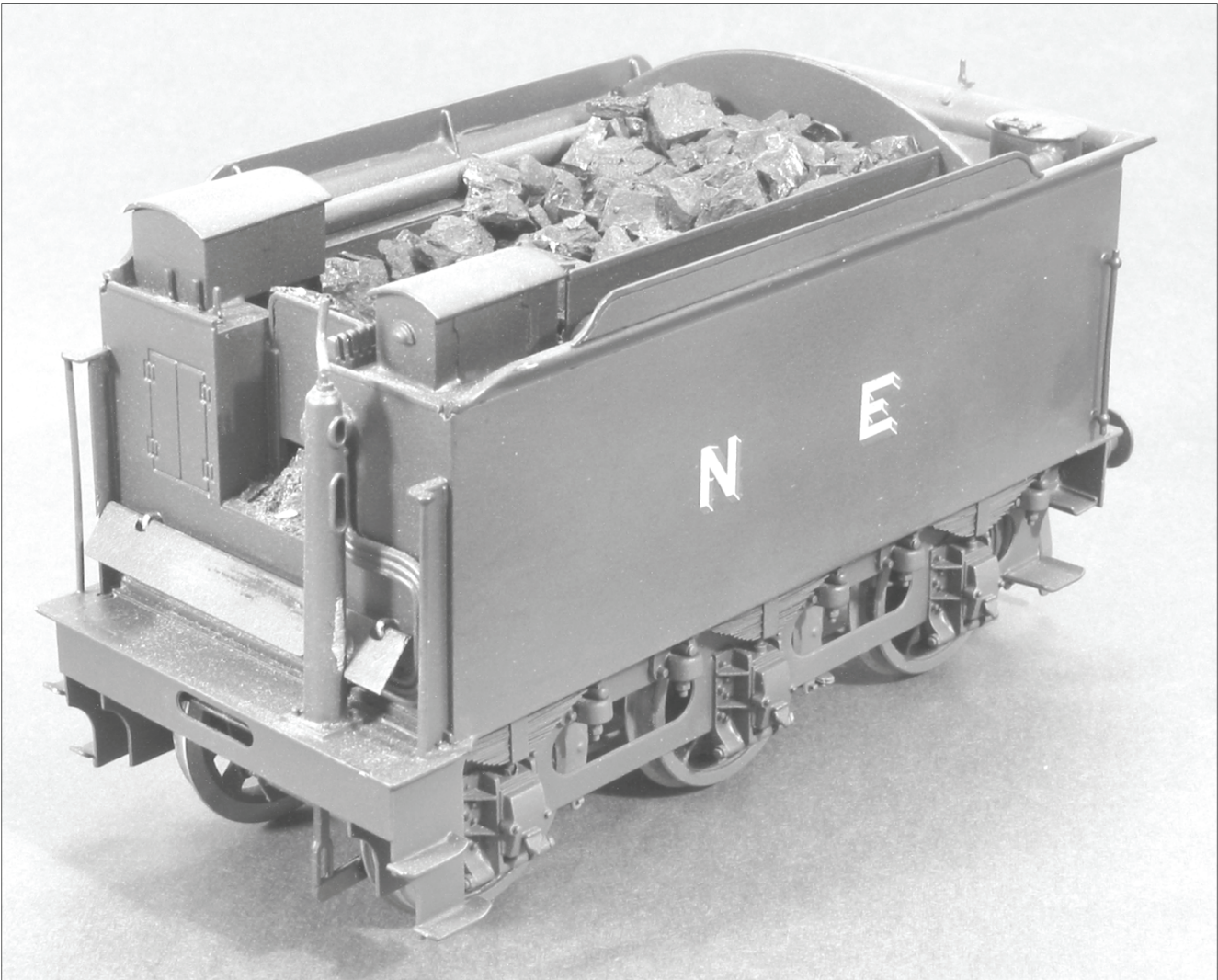


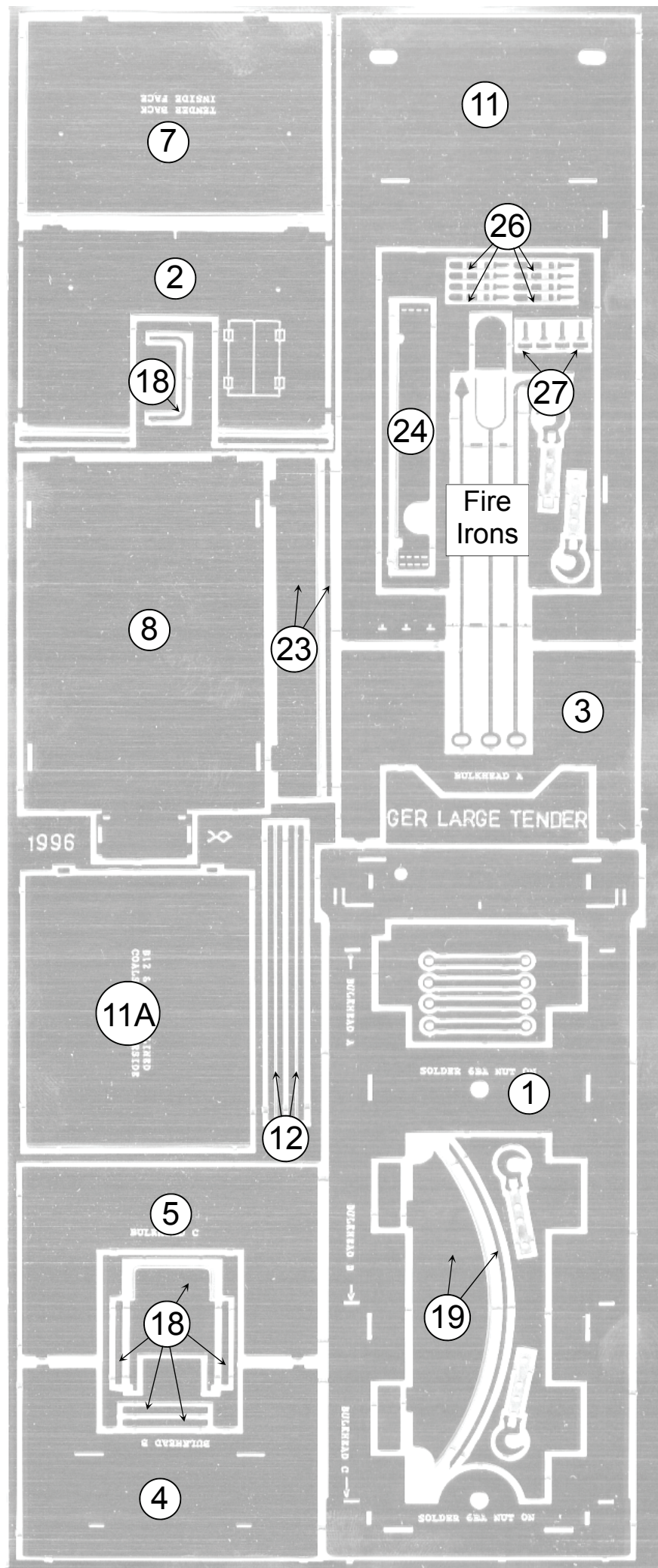
LNER J20 Brass Etched Parts Identification



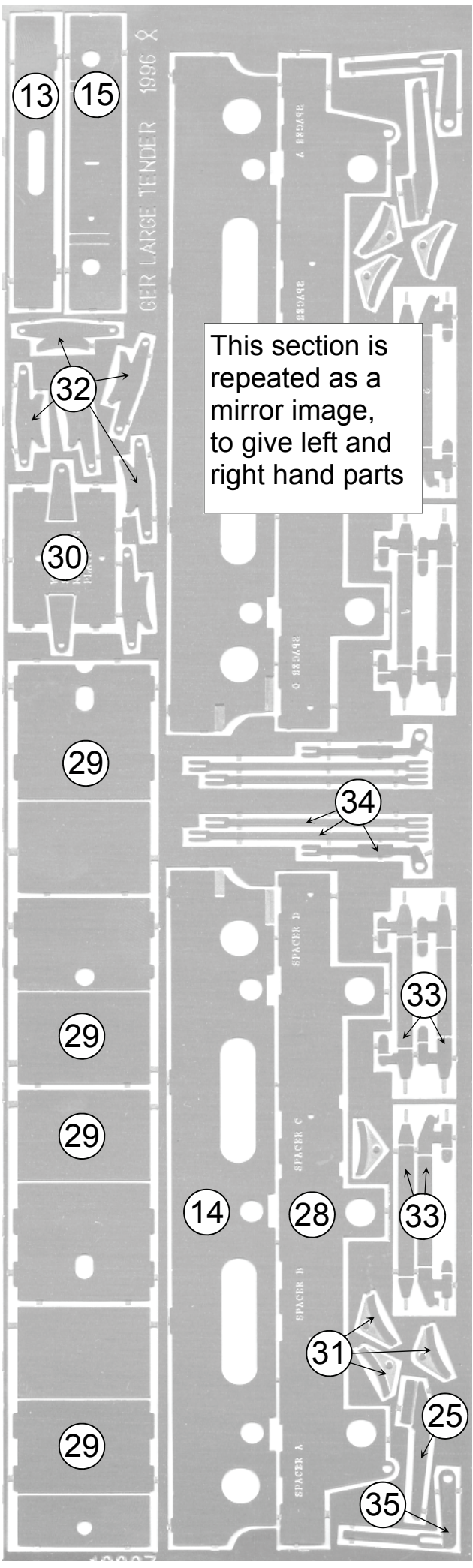
LNER J20 Brass Etched Parts Identification



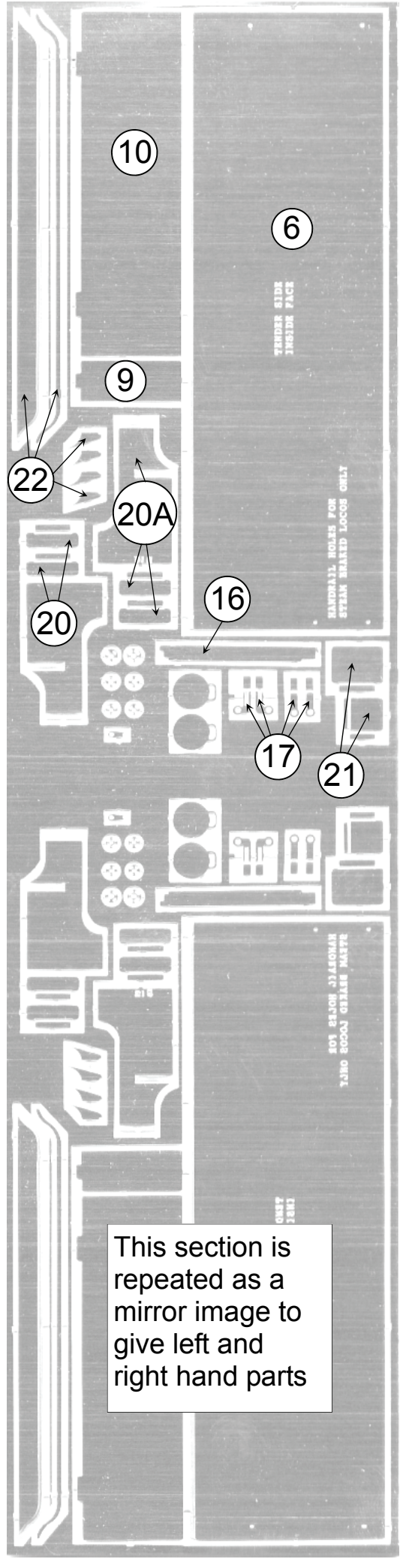




Alternative part 19 for use on tenders with scoop gear and water balance pipes



This section is repeated as a mirror image, to give left and right hand parts



This section is repeated as a mirror image to give left and right hand parts